

SAMPLE DETAILS

SAMPLE NAME: BREZ 7.5oz

Infused, Liquid Edible

CULTIVATOR / MANUFACTURER

Business Name:

License Number:

Address:

DISTRIBUTOR / TESTED FOR

Business Name: Drink BREZ LLC

License Number:

Address:



SAMPLE DETAIL

Batch Number: BBOG75007

Sample ID: 241121L003

Date Collected: 11/21/2024

Date Received: 11/21/2024

Batch Size:

Sample Size: 1.0 units

Unit Mass: 222 grams per Unit

Serving Size: 222 grams per Serving



Scan QR code to verify authenticity of results.

CANNABINOID ANALYSIS - SUMMARY

Total THC: 2.2866 mg/unit

Total CBD: 7.4370 mg/unit

Sum of Cannabinoids: 12.2988 mg/unit

Total Cannabinoids: 12.2988 mg/unit

Total THC/CBD is calculated using the following formulas to take into account the loss of a carboxyl group during the decarboxylation step:

Total THC = Δ^9 -THC + (THCa (0.877))

Total CBD = CBD + (CBDa (0.877))

Sum of Cannabinoids = Δ^9 -THC + THCa + CBD + CBDa + CBG + CBGa +

THCV + THCVa + CBC + CBCa + CBDV + CBDVa + Δ^8 -THC + CBL + CBN

Total Cannabinoids = (Δ^9 -THC+0.877*THCa) + (CBD+0.877*CBDa) +

(CBG+0.877*CBGa) + (THCV+0.877*THCVa) + (CBC+0.877*CBCa) +

(CBDV+0.877*CBDVa) + Δ^8 -THC + CBL + CBN

Density: 1.04 g/mL

SAFETY ANALYSIS - SUMMARY

Δ^9 -THC per Unit:  **PASS**


Microbiology (Plating): ND

For quality assurance purposes. Not a Regulatory Hemp Lab Test Report. These results relate only to the sample included on this report. This report shall not be reproduced, except in full, without written approval of the laboratory.

Sample Certification: California Code of Regulations Title 4 Division 19. Department of Cannabis Control Business and Professions Code. Reference: Sections 26100, 26104 and 26110, Business and Professions Code.

Decision Rule: Statements of conformity (e.g. Pass/Fail) to specifications are made in this report without taking measurement uncertainty into account. Where statements of conformity are made in this report, the following decision rules are applied: PASS - Results within limits/specifications, FAIL - Results exceed limits/specifications.

References: limit of detection (LOD), limit of quantification (LOQ), not detected (ND), not tested (NT), too numerous to count >250 cfu/plate (TNTC), colony-forming unit (cfu)


 LQC verified by: Randi Vuong
 Job Title: Lead Laboratory Technician
 Date: 11/25/2024


 Approved by: Josh Wurzer
 Job Title: Chief Compliance Officer
 Date: 11/25/2024



Cannabinoid Analysis

Tested by high-performance liquid chromatography with diode-array detection (HPLC-DAD).

Method: QSP 1157 - Analysis of Cannabinoids by HPLC-DAD

TOTAL THC: 2.2866 mg/unit

Total THC (Δ^9 -THC+0.877*THCa)

TOTAL CBD: 7.4370 mg/unit

Total CBD (CBD+0.877*CBDa)

TOTAL CANNABINOIDS: 12.2988 mg/unit

Total Cannabinoids (Total THC) + (Total CBD) + (Total CBG) + (Total THCV) + (Total CBC) + (Total CBDV) + Δ^8 -THC + CBL + CBN

TOTAL CBG: 0.1554 mg/unit

Total CBG (CBG+0.877*CBGa)

TOTAL THCV: ND

Total THCV (THCV+0.877*THCVa)

TOTAL CBC: 1.4652 mg/unit

Total CBC (CBC+0.877*CBCa)

TOTAL CBDV: <LOQ

Total CBDV (CBDV+0.877*CBDVa)

CANNABINOID TEST RESULTS - 11/25/2024

COMPOUND	LOD/LOQ (mg/g)	MEASUREMENT UNCERTAINTY (mg/g)	RESULT (mg/g)	RESULT (%)
CBD	0.0001 / 0.0004	±0.00125	0.0335	0.00335
Δ^9 -THC	0.0001 / 0.0005	±0.00057	0.0103	0.00103
CBC	0.0001 / 0.0004	±0.00021	0.0066	0.00066
CBN	0.0001 / 0.0003	±0.00007	0.0025	0.00025
CBL	0.0001 / 0.0004	±0.00007	0.0018	0.00018
CBG	0.0001 / 0.0002	±0.00003	0.0007	0.00007
CBDV	0.0001 / 0.0005	N/A	<LOQ	<LOQ
Δ^8 -THC	0.0003 / 0.0008	N/A	ND	ND
THCa	0.0001 / 0.0002	N/A	ND	ND
THCV	0.0001 / 0.0005	N/A	ND	ND
THCVa	0.0001 / 0.0007	N/A	ND	ND
CBDa	0.0001 / 0.0010	N/A	ND	ND
CBDVa	0.0001 / 0.0007	N/A	ND	ND
CBGa	0.0001 / 0.0003	N/A	ND	ND
CBCa	0.0001 / 0.0006	N/A	ND	ND
SUM OF CANNABINOIDS			0.0554 mg/g	0.00554%

Unit Mass: 222 grams per Unit / Serving Size: 222 grams per Serving

Δ^9 -THC per Unit	110 per-package limit	2.2866 mg/unit	PASS
Δ^9 -THC per Serving		2.2866 mg/serving	
Total THC per Unit		2.2866 mg/unit	
Total THC per Serving		2.2866 mg/serving	
CBD per Unit		7.4370 mg/unit	
CBD per Serving		7.4370 mg/serving	
Total CBD per Unit		7.4370 mg/unit	
Total CBD per Serving		7.4370 mg/serving	
Sum of Cannabinoids per Unit		12.2988 mg/unit	
Sum of Cannabinoids per Serving		12.2988 mg/serving	
Total Cannabinoids per Unit		12.2988 mg/unit	
Total Cannabinoids per Serving		12.2988 mg/serving	

DENSITY TEST RESULT

1.04 g/mL

Tested 11/25/2024

Method: QSP 7870 - Sample Preparation



Microbiology Analysis

PLATING

Analysis conducted by 3M™ Petrifilm™ and plate counts of microbiological contaminants.

Method: QSP 6794 - Plating with 3M™ Petrifilm™

MICROBIOLOGY TEST RESULTS (PLATING) - 11/25/2024 ND

COMPOUND	RESULT (cfu/g)
Total Aerobic Bacteria	ND

NOTES

REPORT PREPARED FOR:

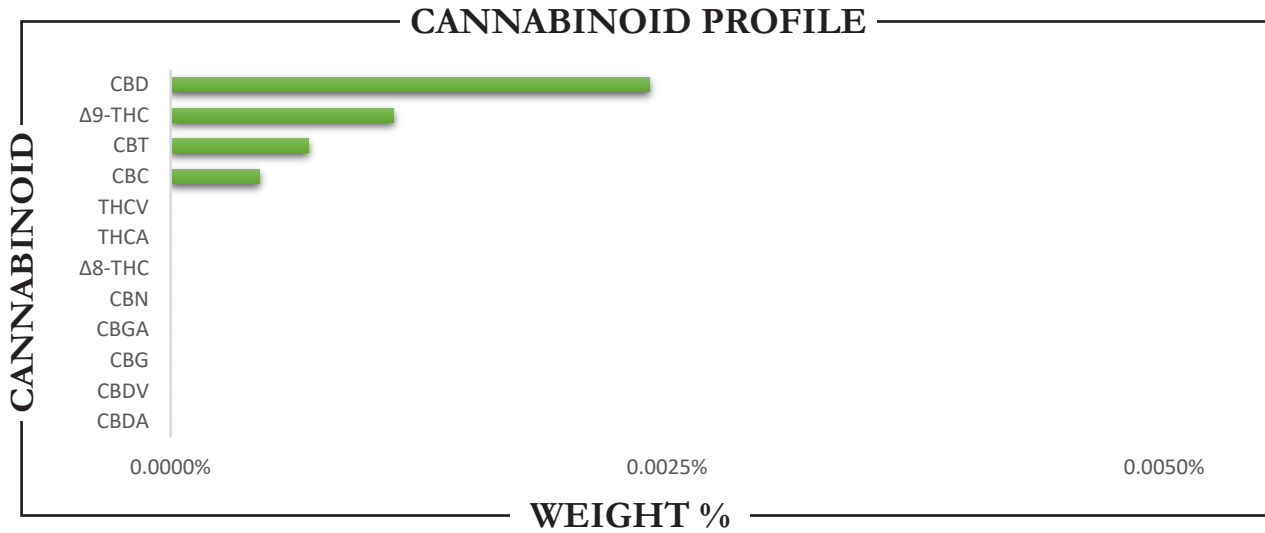
Drink BREZ LLC
313 Datura St. Ste 200
West Palm Beach, FL 33401

PROJECT# 24021845
LAB ID 54051594
REPORT DATE 11/22/2024



SAMPLE NAME: BREZ Lemon Elderflower - 7.5oz
DATE RECEIVED: 11/21/2024

TOTAL Δ9-THC	TOTAL CBD	TOTAL CANNABINOIDS
2.49 MG	5.35 MG	10.37 MG



CANNABINOID	WEIGHT (%)	MG/Can (7.5 fl oz)
CBC	0.0004	1.00
CBD	0.0024	5.35
CBDA	ND	ND
CBDV	ND	ND
CBG	ND	ND
CBGA	ND	ND
CBN	ND	ND
Δ8-THC	ND	ND
Δ9-THC	0.0011	2.49
CBT	0.0007	1.54
THCA	ND	ND
THCV	ND	ND
Total CBD	0.0024	5.35
Total CBG	ND	ND
Total THC	0.0011	2.49



Analysis Method: TP-POT-05
By HPLC-VWD
Total THC = (0.877 x THCA) + Δ9-THC
Total CBD = (0.877 x CBDA) + CBD
Total CBG = (0.877 x CBGA) + CBG
ND = Not Detected

Prepared By: TJS
Prep Date: 11/21/2024
Batch ID: NOV2124A-POT

Analyzed By: TJS
Analysis Date: 11/21/2024



APPROVED BY:
JUSTIN HALL
LAB DIRECTOR

Justin Hall
SIGNATURE

11/22/2024
SIGNED ON



Certificate of Analysis
Compliance Test

Client Information:

Drink BREZ LLC

313 Datura Street, Ste.200
West Palm Beach, FL 33401

Batch # BBOG75007
Batch Date: 2024-11-08
Extracted From: Hemp

Test Reg State: Florida

Order # DRI241108-030001
Order Date: 2024-11-08
Sample # AAGC854

Sampling Date: 2024-11-12
Lab Batch Date: 2024-11-12
Completion Date: 2024-11-18

Volume: 222 ml



Terpenes

Specimen Weight: 451.000 mg

Tested
SOP13.045 (GC/GCMS)

Dilution Factor: 3.000

Analyte	LOQ (%)	Result (mg/g)	(%)	Analyte	LOQ (%)	Result (mg/g)	(%)
(R)-(+)-Limonene	0.002	0.056	0.006	Fenchyl Alcohol	0.002	<LOQ	<LOQ
(+)-Cedrol	0.002	<LOQ	<LOQ	Gamma-Terpinene	0.002	<LOQ	<LOQ
3-Carene	0.002	<LOQ	<LOQ	Geraniol	0.002	<LOQ	<LOQ
alpha-Bisabolol	0.002	<LOQ	<LOQ	Geranyl acetate	0.002	<LOQ	<LOQ
alpha-Cedrene	0.002	<LOQ	<LOQ	Guaiol	0.002	<LOQ	<LOQ
alpha-Humulene	0.002	<LOQ	<LOQ	Hexahydrothymol	0.002	<LOQ	<LOQ
alpha-Phellandrene	0.002	<LOQ	<LOQ	Isoborneol	0.002	<LOQ	<LOQ
alpha-Pinene	0.002	<LOQ	<LOQ	Isopulegol	0.002	<LOQ	<LOQ
alpha-Terpinene	0.002	<LOQ	<LOQ	Linalool	0.002	<LOQ	<LOQ
beta-Myrcene	0.002	<LOQ	<LOQ	Nerol	0.002	<LOQ	<LOQ
beta-Pinene	0.002	<LOQ	<LOQ	Ocimene	0.00033	<LOQ	<LOQ
Borneol	0.004	<LOQ	<LOQ	Pulegone	0.002	<LOQ	<LOQ
Camphene	0.002	<LOQ	<LOQ	Sabinene	0.002	<LOQ	<LOQ
Camphors	0.006	<LOQ	<LOQ	Sabinene Hydrate	0.002	<LOQ	<LOQ
Caryophyllene oxide	0.002	<LOQ	<LOQ	Terpinolene	0.002	<LOQ	<LOQ
cis-Nerolidol	0.002	<LOQ	<LOQ	Total Terpeneol	0.00126	<LOQ	<LOQ
Eucalyptol	0.002	<LOQ	<LOQ	trans-Caryophyllene	0.002	<LOQ	<LOQ
Farnesene	0.002	<LOQ	<LOQ	trans-Nerolidol	0.002	<LOQ	<LOQ
Fenchone	0.002	<LOQ	<LOQ	Valencene	0.002	<LOQ	<LOQ



PCR Total Yeast and Mold

Specimen Weight: 513.800 mg

Passed
SOP13.017 (qPCR)

Dilution Factor: 8.000

Analyte	Action Level (cfu/g)	LOQ (cfu/g)	Result (cfu/g)
Total Yeast/Mold	100000	1000	<LOQ
Prep. By: 1161	Date: 2024-11-13 12:41:24	Analyzed By: 1161	Date: 2024-11-13 12:41:24
Reviewed By: 1161	Date: 2024-11-14 12:09:13	Lab Batch #: AAGC854-218	Date: 2024-11-14 12:09:13



Pathogenic Microbiology SAE (MicroArray)

Specimen Weight: 1021.700 mg

Passed
SOP13.019 (Micro Array)

Dilution Factor: 1.000

Analyte	Result (cfu/g)	Analyte	Result (cfu/g)
Aspergillus flavus	Absence in 1g	Aspergillus terreus	Absence in 1g
Aspergillus fumigatus	Absence in 1g	Salmonella	Absence in 1g
Aspergillus niger	Absence in 1g	STEC E. Coli	Absence in 1g

Aixia Sun
Aixia Sun Lab Director/Principal Scientist
D.H.Sc., M.Sc., B.Sc., MT (AAB)

Definitions are found on page 1

This report shall not be reproduced, without written approval, from ACS Laboratory. The results of this report relate only to the material or product analyzed. Test results are confidential unless explicitly waived otherwise. ACS Laboratory is accredited to the ISO/IEC 17025:2017 Standard. The tests and/or calibrations marked with an "*" are not ISO/IEC 17025:2017 accredited test results.





Certificate of Analysis
Compliance Test

Client Information:

Drink BREZ LLC
313 Datura Street, Ste.200
West Palm Beach, FL 33401

Batch # BBOG75007
Batch Date: 2024-11-08
Extracted From: Hemp

Test Reg State: Florida

Order # DRI241108-030001
Order Date: 2024-11-08
Sample # AAGC854

Sampling Date: 2024-11-12
Lab Batch Date: 2024-11-12
Completion Date: 2024-11-18

Volume: 222 ml



Heavy Metals

Specimen Weight: 250.600 mg

Passed
SOP13.048 (ICP-MS)

Dilution Factor: 199

Analyte	LOD (ppb)	LOQ (ppb)	Action Level (ppb)	Result (ppb)	Analyte	LOD (ppb)	LOQ (ppb)	Action Level (ppb)	Result (ppb)
Arsenic (As)	4.83	100	1500	<LOQ	Lead (Pb)	11.76	100	500	<LOQ
Cadmium (Cd)	.64	100	500	<LOQ	Mercury (Hg)	.58	100	3000	<LOQ



Mycotoxins

Specimen Weight: 587.400 mg

Passed
SOP13.007 (LCMS)

Dilution Factor: 2.550

Analyte	LOD (ppb)	LOQ (ppb)	Action Level (ppb)	Result (ppb)	Analyte	LOD (ppb)	LOQ (ppb)	Action Level (ppb)	Result (ppb)
Aflatoxin B1	3.0400E-1	6	20	<LOQ	Aflatoxin G2	2.7100E-1	6	20	<LOQ
Aflatoxin B2	7.7000E-2	6	20	<LOQ	Ochratoxin A	7.5400E-1	3.8	20	<LOQ
Aflatoxin G1	3.0400E-1	6	20	<LOQ					



Residual Solvents - FL (CBD)

Specimen Weight: 15.100 mg

Passed
SOP13.039 (GCMS)

Dilution Factor: 1.000

Analyte	LOD (ppm)	LOQ (ppm)	Action Level (ppm)	Result (ppm)	Analyte	LOD (ppm)	LOQ (ppm)	Action Level (ppm)	Result (ppm)
1,1-Dichloroethene	0.0094	0.16	8	<LOQ	Heptane	0.0013	1.39	5000	<LOQ
1,2-Dichloroethane	0.0003	0.04	5	<LOQ	Hexane	0.068	1.17	290	<LOQ
Acetone	0.015	2.08	5000	<LOQ	Isopropyl alcohol	0.0048	1.39	500	<LOQ
Acetonitrile	0.06	1.17	410	<LOQ	Methanol	0.0005	0.69	3000	<LOQ
Benzene	0.0002	0.02	2	<LOQ	Methylene chloride	0.0029	2.43	600	<LOQ
Butanes	0.4167	2.5	2000	<LOQ	Pentane	0.037	2.08	5000	<LOQ
Chloroform	0.0001	0.04	60	<LOQ	Propane	0.031	5.83	2100	<LOQ
Ethanol	0.0021	2.78	NA	4110.662	Toluene	0.0009	2.92	890	<LOQ
Ethyl Acetate	0.0012	1.11	5000	<LOQ	Total Xylenes	0.0001	2.92	2170	<LOQ
Ethyl Ether	0.0049	1.39	5000	<LOQ	Trichloroethylene	0.0014	0.49	80	<LOQ
Ethylene Oxide	0.0038	0.1	5	<LOQ					

Aixia Sun

Aixia Sun Lab Director/Principal Scientist
D.H.Sc., M.Sc., B.Sc., MT (AAB)

Definitions are found on page 1

This report shall not be reproduced, without written approval, from ACS Laboratory. The results of this report relate only to the material or product analyzed. Test results are confidential unless explicitly waived otherwise. ACS Laboratory is accredited to the ISO/IEC 17025:2017 Standard. The tests and/or calibrations marked with an "*" are not ISO/IEC 17025:2017 accredited test results.





Certificate of Analysis
Compliance Test

Client Information:

Drink BREZ LLC
313 Datura Street, Ste.200
West Palm Beach, FL 33401

Batch # BBOG75007
Batch Date: 2024-11-08
Extracted From: Hemp

Test Reg State: Florida

Order # DRI241108-030001
Order Date: 2024-11-08
Sample # AAGC854

Sampling Date: 2024-11-12
Lab Batch Date: 2024-11-12
Completion Date: 2024-11-18

Volume: 222 ml

Pesticides

Specimen Weight: 587.400 mg

Passed

SOP13.007 (LCMS/GCMS)

Dilution Factor: 2.550

Analyte	LOD (ppb)	LOQ (ppb)	Action Level (ppb)	Result (ppb)	Analyte	LOD (ppb)	LOQ (ppb)	Action Level (ppb)	Result (ppb)
Abamectin	2.8800E-1	28.23	300	<LOQ	Fludioxonil	1.7400E+0	48	3000	<LOQ
Acephate	2.3000E-2	30	3000	<LOQ	Hexythiazox	4.9000E-2	30	2000	<LOQ
Acequinocyl	9.5640E+0	48	2000	<LOQ	Imazalil	2.4800E-1	30	100	<LOQ
Acetamiprid	5.2000E-2	30	3000	<LOQ	Imidacloprid	9.4000E-2	30	3000	<LOQ
Aldicarb	2.6000E-2	30	100	<LOQ	Kresoxim Methyl	4.2000E-2	30	1000	<LOQ
Azoxystrobin	8.1000E-2	10	3000	<LOQ	Malathion	8.2000E-2	30	2000	<LOQ
Bifenazate	1.4150E+0	30	3000	<LOQ	Metalaxyl	8.1000E-2	10	3000	<LOQ
Bifenthrin	4.3000E-2	30	500	<LOQ	Methiocarb	3.2000E-2	30	100	<LOQ
Boscalid	5.5000E-2	10	3000	<LOQ	Methomyl	2.2000E-2	30	100	<LOQ
Captan	6.1200E+0	30	3000	<LOQ	methyl-Parathion	1.7100E+0	10	100	<LOQ
Carbaryl	2.2000E-2	10	500	<LOQ	Mevinphos	2.1500E+0	10	100	<LOQ
Carbofuran	3.4000E-2	10	100	<LOQ	Myclobutanil	1.0290E+0	30	3000	<LOQ
Chlorantraniliprole	3.3000E-2	10	3000	<LOQ	Naled	9.5000E-2	30	500	<LOQ
Chlordane	1.0000E+1	10	100	<LOQ	Oxamyl	2.5000E-2	30	500	<LOQ
Chlorfenapyr	3.4000E-2	30	100	<LOQ	Paclbutrazol	6.5000E-2	30	100	<LOQ
Chlormequat Chloride	1.0800E-1	10	3000	<LOQ	Pentachloronitrobenzene	1.3200E+0	10	200	<LOQ
Chlorpyrifos	3.5000E-2	30	100	<LOQ	Permethrin	3.4300E-1	30	1000	<LOQ
Clofentezine	1.1900E-1	30	500	<LOQ	Phosmet	8.2000E-2	30	200	<LOQ
Coumaphos	3.7700E+0	48	100	<LOQ	Piperonylbutoxide	2.9000E-2	30	3000	<LOQ
Cyfluthrin	3.1100E+0	30	1000	<LOQ	Prallethrin	7.9800E-1	30	400	<LOQ
Cypermethrin	1.4490E+0	30	1000	<LOQ	Propiconazole	7.0000E-2	30	1000	<LOQ
Daminozide	8.8500E-1	30	100	<LOQ	Propoxur	4.6000E-2	30	100	<LOQ
Diazinon	4.4000E-2	30	200	<LOQ	Pyrethrins	2.3593E+1	30	1000	<LOQ
Dichlorvos	2.1820E+0	30	100	<LOQ	Pyridaben	3.2000E-2	30	3000	<LOQ
Dimethoate	2.1000E-2	30	100	<LOQ	Spinetoram	8.0000E-2	10	3000	<LOQ
Dimethomorph	5.8300E+0	48	3000	<LOQ	Spinosad	8.8000E-2	30	3000	<LOQ
Ethoprophos	3.6000E-1	30	100	<LOQ	Spiromesifen	2.6100E-1	30	3000	<LOQ
Etofenprox	1.1600E-1	30	100	<LOQ	Spirotetramat	8.9000E-2	30	3000	<LOQ
Etoxazole	9.5000E-2	30	1500	<LOQ	Spiroxamine	1.3100E-1	30	100	<LOQ
Fenhexamid	5.1000E-1	10	3000	<LOQ	Tebuconazole	6.7000E-2	30	1000	<LOQ
Fenoxycarb	1.0700E-1	30	100	<LOQ	Thiacloprid	6.4000E-2	30	100	<LOQ
Fenpyroximate	1.3800E-1	30	2000	<LOQ	Thiamethoxam	5.0000E-2	30	1000	<LOQ
Fipronil	1.0700E-1	30	100	<LOQ	Trifloxystrobin	3.7000E-2	30	3000	<LOQ
Flonicamid	5.1700E-1	30	2000	<LOQ					

Aixia Sun
Aixia Sun Lab Director/Principal Scientist
D.H.Sc., M.Sc., B.Sc., MT (AAB)

Definitions are found on page 1

This report shall not be reproduced, without written approval, from ACS Laboratory. The results of this report relate only to the material or product analyzed. Test results are confidential unless explicitly waived otherwise. ACS Laboratory is accredited to the ISO/IEC 17025:2017 Standard. The tests and/or calibrations marked with an "*" are not ISO/IEC 17025:2017 accredited test results.

